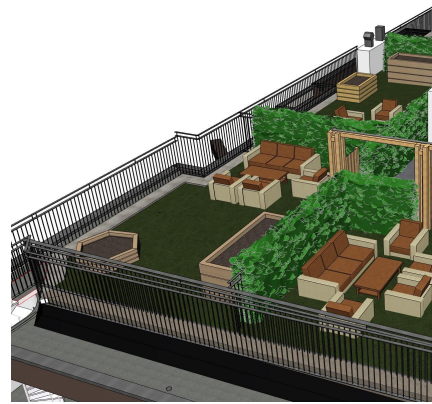
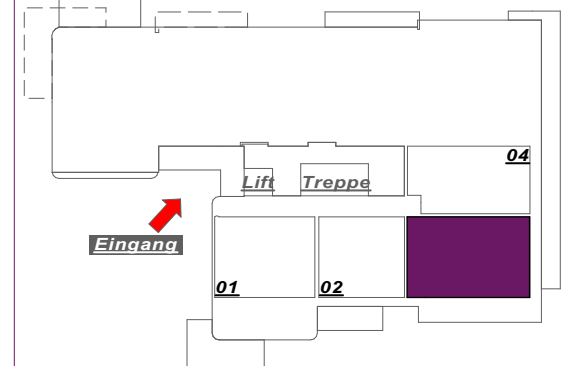
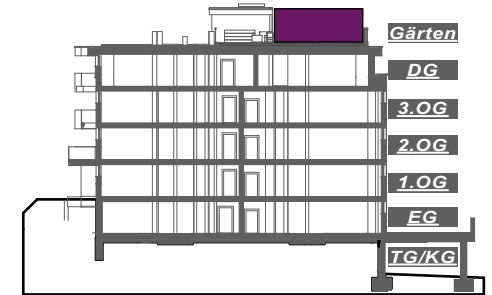
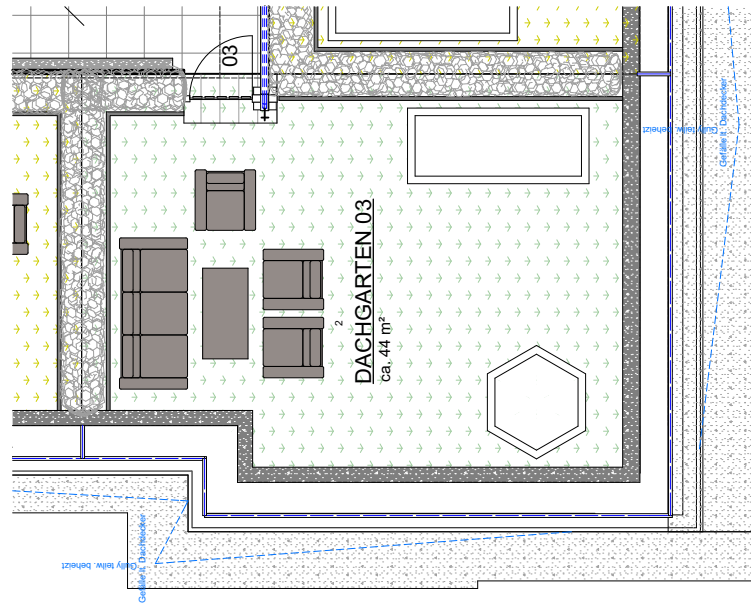




3D- Schemaskizze



3D- Schemaskizze



ÜBERSICHT: Lage

Entwurf Wohnanlage wohnpark maschl Bauabschnitt 3
Maschlweg 1, 5600 St. Johann

Garten 03 M1:100

Dachgärten ca. 44 m²

Gemeinnützige Eigenheim-Baugemeinschaft
reg. GenmbH · Kirchengasse 4
5600 St. Johann i. Pg. · T: +43 (0)6412 4298