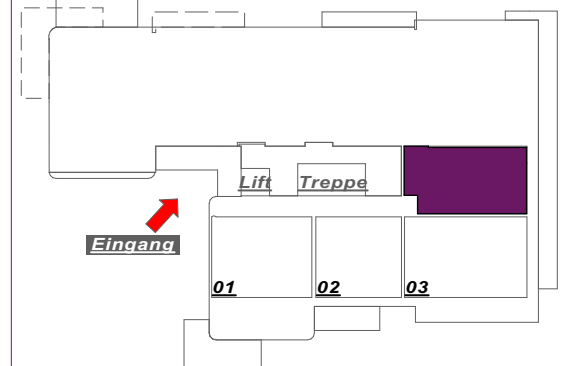
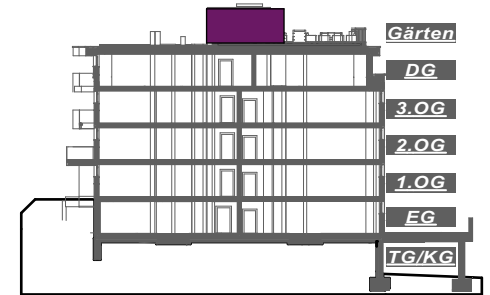
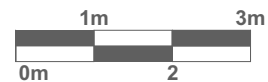
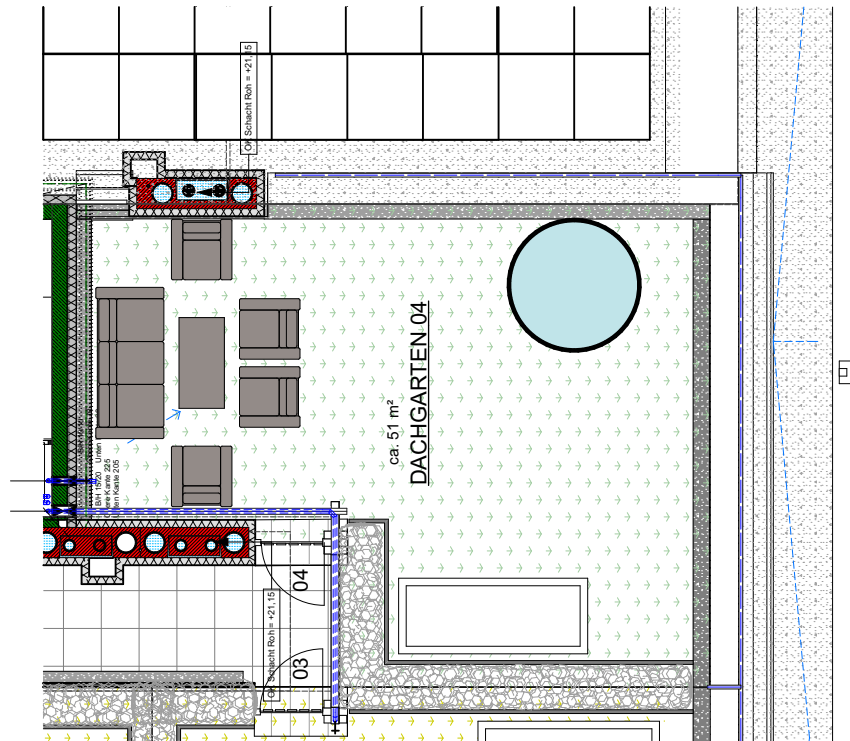




3D-Schemaskizze



ÜBERSICHT: LAGE

Entwurf Wohnanlage wohnpark maschl Bauabschnitt 3
Maschlweg 1, 5600 St. Johann

Garten 04 M 1:100

Dachgärten ca. 51 m²

Gemeinnützige Eigenheim-Baugemeinschaft
reg. GenmbH · Kirchengasse 4
5600 St. Johann i. Pg. · T: +43 (0)6412 4298